



User Manual

# Wireless USB-C to HDMI Extender with Casting

CSWBC030

## Contents

What's included.....	3
Introduction.....	3
Standards & Compliance .....	3
Features .....	4
Specifications .....	4
Connections and Diagnostics.....	5
Transmitter .....	5
Receiver .....	5
Instructions.....	6
Wireless Extender Mode.....	6
Transmitter .....	6
Receiver .....	6
Casting Mode.....	7
AirPlay Devices .....	7
MiraCast Devices .....	9
Application Diagram .....	10
1. Wireless Extension Mode.....	10
2. Independent Screen Projection Mode .....	10

## What's included



Q.1 USB-C 1080P60 Transmitter



Q.1 HDMI 1080P60 Receiver with Casting



Q.1 USB-C to USB-A cable, for power to the RX

## Introduction

The Bundl Wireless USB-C to HDMI extender reveals the latest solutions for USB-C connectivity by eliminating wire. Connect to any HDMI display easily with Plug and Play functionality. With clear line of sight between the transmitter and receiver, you can extend up to 90 feet apart. The receiver also works with casting from Airplay and Miracast phones and tablets. Transport crystal clear 1080P60 with extremely low latency.

## Standards & Compliance



## Features

- Extend 1080P60 USB-C to HDMI up to 90 feet
- Cast from AirPlay and Miracast devices to the Receiver
- Low-Latency Performance
- Compact, Plug-and-Play Setup

## Specifications

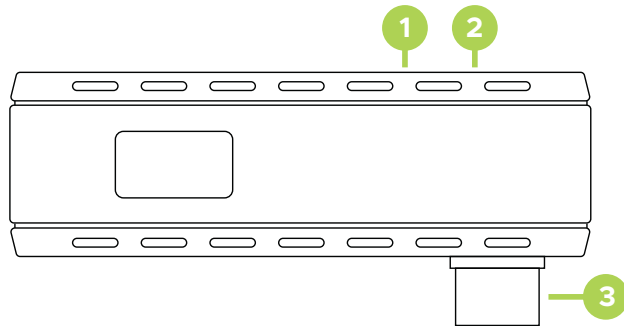
<b>Standards &amp; Compliance</b>	
Signal Standards	HDMI 1.3, USB 3.0, DP-Alt Mode
HDCP	HDCP 1.2
<b>Connector Types</b>	
HDMI Outputs	1 × HDMI OUT (Type A, 19-pin female)
USB Input	1 × USB IN (USB-C)
<b>Performance</b>	
Max Video Resolution	1920×1080p
Video Bandwidth	5 Gbps
Color Depth	4:2:0, 4:2:2, 4:4:4
Transmission Distance	90 ft (30m) clear line of sight
Wireless Transmission Type	802.11ac 5G
ESD Protection	AirPlay, Miracast
<b>Power</b>	
Power Input	Female USB-C port
Power Supply	DC 5V/2A
Power Consumption	3.5W (max)
<b>Environment</b>	
Operating Temperature	23 to 158°F / -5 to 70°C
Relative Humidity	5 to 80% RH (no condensation)
<b>Enclosure</b>	
Product Dimensions (W × D × H)	TX: 2.3 in × 1.1 in × 0.43 in (58mm × 27mm × 11mm) RX: 2.5 in × 0.95 in × 0.46 in (64.4mm × 24.2mm × 11.7mm)
Weight	0.42 lbs (190g)
<b>Warranty</b>	
Parts	1 year
Labor	1 year

Note: Specifications are subject to change without notice.



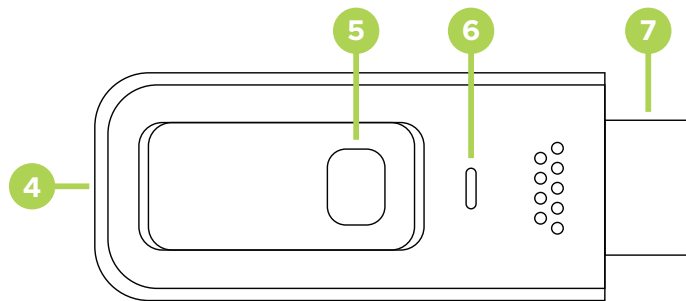
## Connections and Diagnostics

### Transmitter



1. Status indicator  
**LED light status:**
  - Flashing: Video signal abnormal
  - Steady ON: Video signal normal
2. Transmitter Mirror / Pairing button
3. USB-C HDMI video signal input interface

### Receiver



4. Power input interface
5. Receiver Pairing button
6. Status indicator  
**LED light status:**
  - Flashing: Video signal abnormal
  - Steady ON: Video signal normal
7. HDMI video signal output interface

## Instructions

### Wireless Extender Mode

#### Transmitter

Plug the Transmitter into the HDMI output connector of your source. Make sure your source resolution output is 3840 x 2160 P30 Hz or less. Connect the USB-C end of the supplied USB-C to USB-A cable into the Transmitter power input. Connect the USB-A side of the cable to a USB-A connection on your source. If your source does not have a USB-A port, then you can use a USB-A to power adapter.

Press the function button on the top of the Transmitter for 5 seconds to enter pairing mode. The LED indicator light on the top of the Receiver will change from flashing to on, and the blue interface screen on your display will update to indicate pairing process. Within 2 to 10 seconds as long as you are sending 4K30 or lower resolution, you will see your source appear on your display.

If you wish to stop showing your source on your display, press the Transmitter function button to stop the connection.

#### Receiver

Connect the USB-C end of the supplied USB-C to USB-A cable into the Receiver power input. Connect the USB-A side of the cable to a USB-A connection on your display. If your display does not have a USB-A port, then you can use a USB-A to power adapter.

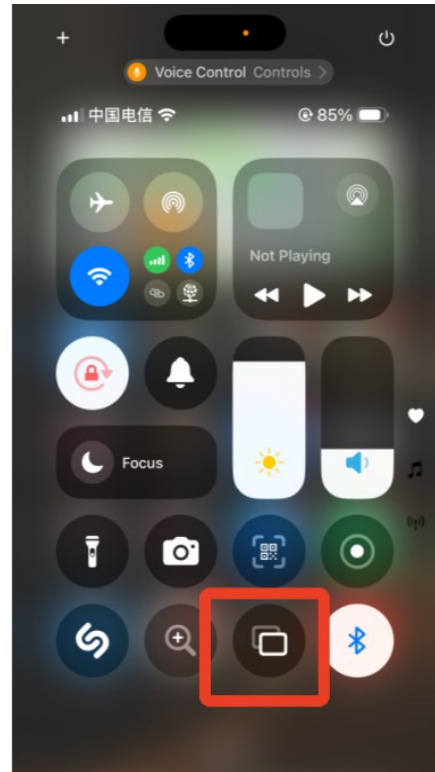
Plug the Receiver into the HDMI input connector of your display, or device you wish to receive the signal. Make sure your source resolution output is 3840 x 2160 P30 Hz or less.

The Receiver will display a blue startup screen. Press the function button on the side of the Receiver for 5 seconds to enter pairing mode. The LED indicator light on the top of the Receiver will change from flashing to on, indicating it is ready to pair once the Transmitter is powered and receiving a valid input.

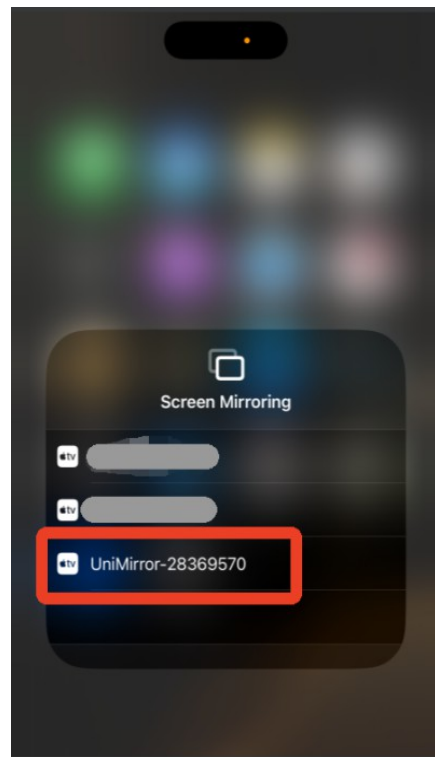
## Casting Mode

### AirPlay Devices

1. Use your Apple device, swipe down from the top of the screen to open the Control Center, then tap the screen mirroring icon. As shown in Figure 1-1.



2. Select the target device from the list of available devices and click to confirm the screen projection. As shown in Figure 1-2.



- For the first connection of an Apple device, you may need to enter the SSID password. The screen mirroring interface will display the password for the corresponding SSIO, just enter it. As shown in Figure 1-3.

● UniMirrorLite-xxxxxx

### Screen Mirroring Mode

**Phone Usage Guide**

1. Slide down from top to bottom.
2. Select Screen Mirroring.
3. Select UniMirrorLite-xxxx

iPhone → →

or

Android phone → →

**Computer Usage Guide**

MacOS → 1. Tap the 'Control Center' icon in the top-right corner of the screen. →

Windows → 1. Press Win + K on the keyboard to quickly open the casting screen. →

### P2P Mode

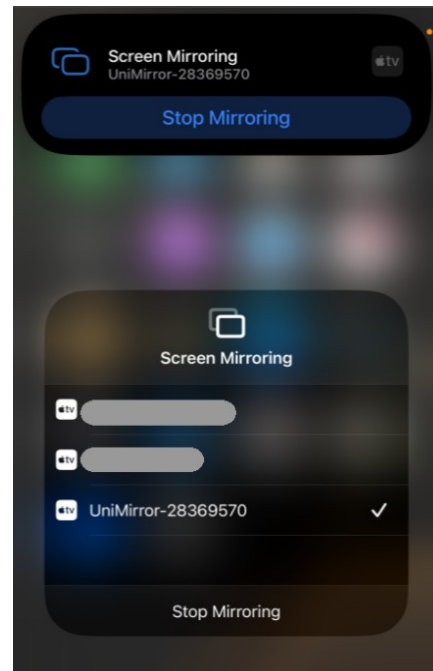
**RX & TX Device Pairing Guide**

1. Connect the TX(Transmitter) to your computer and power the TX with DC 5V2A charger.
2. Wait a few seconds until the TX and RX connect successful. With WIN+P the mirror or copy the computer video.

### Landscape to portrait rotation

Press the device button to zoom or rotate the video.

- After a successful projection, the corresponding device code will be checked, and the screen will be mirrored to the designated display device. As shown in Figure 1-4.

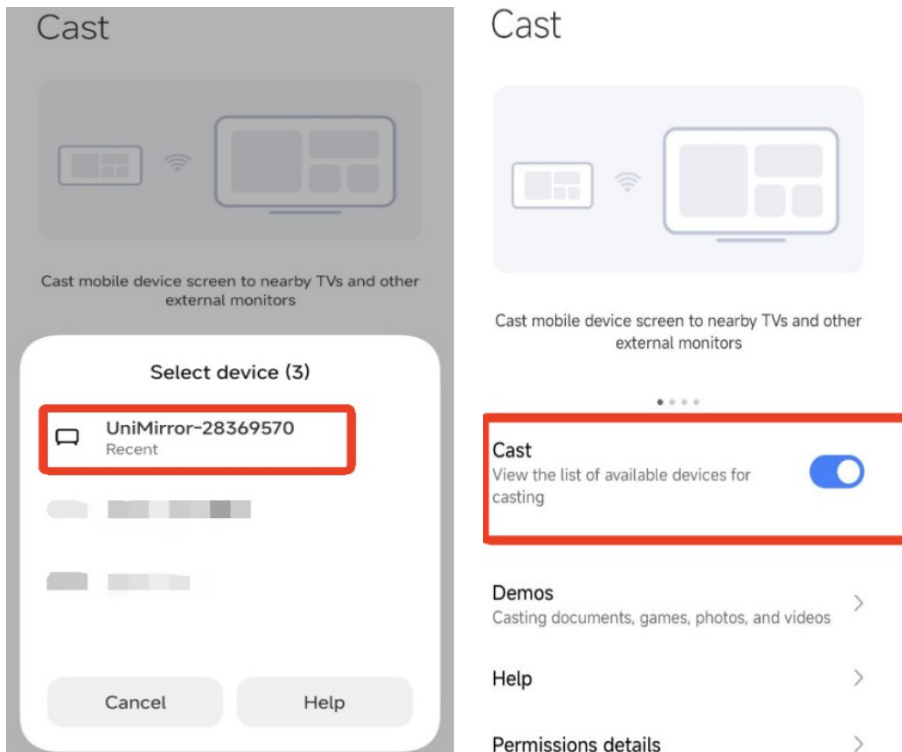


## MiraCast Devices

1. On your Miracast-enabled device, go to Settings, then More Connectivity Options

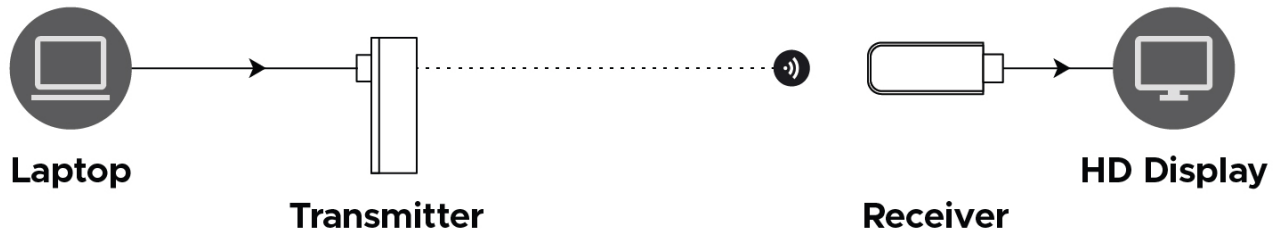


2. Turn on the Cast switch, and select the Bundl Receiver, commonly labeled as UniMirror and a number:

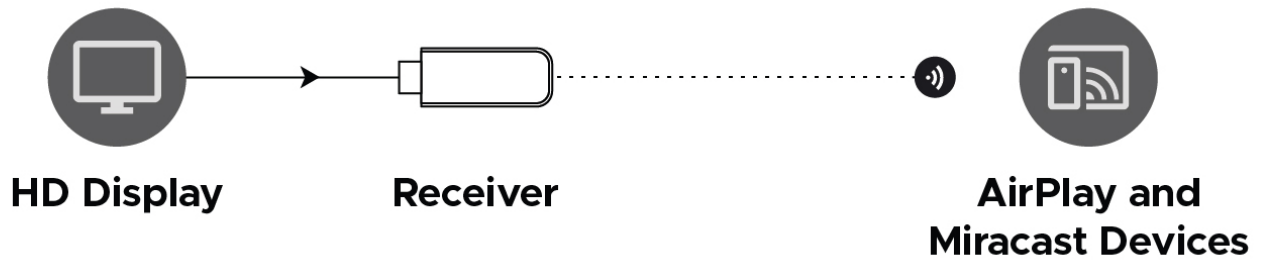


## Application Diagram

### 1. Wireless Extension Mode



### 2. Independent Screen Projection Mode



For further information,  
contact [support@bundltech.com](mailto:support@bundltech.com)



© 2025 Bundl. Bundl, the Bundl logo, and other Bundl marks are owned by Bundl and may be registered trademarks. All other trademarks are the property of their respective owners. Bundl assumes no responsibility for any errors that may appear in this publication. Product, pricing, and feature information contained herein are subject to change without notice.